

Women's National Duckpin Association

Professional Bowling Tour

[www.wndatour.com](http://www.wndatour.com)



*The Best in Duckpin Bowling*

**Johnson's Lanes**

Hamden, Connecticut

June 19 & 20, 2010





# Women's National Duckpin Association



483 South Hills Ct  
Westminster, MD 21158-9418  
443.879.WNDA

## 2010 Officers

|                  |  |
|------------------|--|
| President:       | Chuck Kramer                               |
| Vice Presidents: | Pam Riccio (North), Bethany Fisher (South) |
| Treasurer:       | Jodi Hewitt                                |
| Statistician:    | Jodi Hewitt/Chuck Kramer                   |
| Secretary:       |  |
| Event Director:  | Carol Mazzeo                               |

## 2010 Governing Body

**Metro DC/MD/VA**  
Vicki Kramer

**Baltimore & Vicinity**  
Cindy McMillen  
Trina Rafferty

**Connecticut**  
Kristen Robustelli  
Krystal Ritchie (Alt)

**Mid Maryland**  
Brenda Hoff  
Beth Dayhoff (Alt)

**Rhode Island & Massachusetts**  
Diane Silvia

## 2010 Event Schedule

|                 |   |                 |
|-----------------|---|-----------------|
| May 28 - 30     | Duckpin Olympics @ Turner's Dual Lanes<br>Winner: <b>Jackie Adams</b> | Hagerstown, MD  |
| June 18 - 20    | Johnson's Lanes   | Hamden, CT      |
| July 9 - 11     | Glen Burnie Lanes   | Glen Burnie, MD |
| August 6 - 8    | Town Hall Lanes (with DPBA)   | Johnston, RI    |
| September 3 - 5 | Pinland Bowl  | Baltimore, MD   |
| October 15 - 17 | Grand Prix Invitational @ AMF Towson                                  | Towson, MD      |

# **2010 HALL OF FAME BANQUET**

The WNDA and DPBA hosted their Hall of Fame Banquet over the Memorial Day Weekend in Hagerstown, Maryland, with a combined total of 9 inductees in 2010.

Inductees into the WNDA Hall of Fame included:

- Jackie Adams Superior Performance
- Tammy Ashworth Superior Performance
- Ralph Curry Meritorious Service
- Susan Phillips Superior Performance
- Connie Ward Superior Performance

Inductees into the DPBA Hall of Fame included:

- Walt Brooks Superior Performance
- Dennis Cabral Superior Performance
- Steve Dryer Superior Performance
- Erik Pellett Superior Performance

The banquet had a terrific turnout and was attended by over 130 people that included a number of WNDA and DPBA Hall of Fame members. They were there to show great support for their respective Halls of Fame and their newest members, and to have a good time. The room was filled with laughter and camaraderie as everyone who attended did so not only with the intention of supporting those whom they knew, but also with the desire of honoring every inductee's accomplishments. It was an evening for the inductees to share, to celebrate, and to reflect upon the times and accomplishments that had led them to that moment.

We learned new things about the inductees, such as where they were born, some odd family names, a few embarrassing moments. These brief peeks into their personal lives enabled us to see them more so for the people they are off the lanes, in addition to what we already knew about them as bowlers. We saw how many were humbled by achieving such an honor.

Families and friends all shared in this celebration together. We all laughed together, and many of us cried together, but mostly we just celebrated this moment to remember... together! Congratulations to all of the 2010 WNDA and DPBA Hall of Fame Inductees!

## **CONGRATULATIONS 2010 INDUCTEES!**



Jackie Adams  
Superior Performance



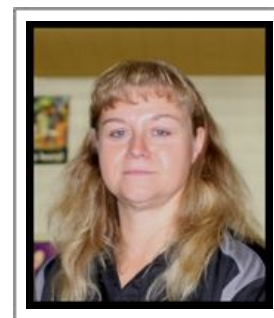
Ralph Curry  
Meritorious Service



Tammy Ashworth  
Superior Performance



Susan Phillips  
Superior Performance



Connie Ward  
Superior Performance



# Your One-Call Auto Care Center

**ONE STOP AUTO SHOP**

**GREEN'S**  
*garage*  
**TOWING & RECOVERY**



Serving Carroll County for Over 30 Years  
"We go anywhere. Anytime."

- 24 Hour Emergency Service
- 4x4 Recovery
- Medium Duty Towing and School Buses
- Local or Long Distance
- Flatbed Specialists
- Complete Body & Painting Shop
- Auto Repair Shop
- AAA Road Service
- MD State Inspection Services

*Thank You for Voting Us Carroll's Best!*

**10% OFF**  
All Big Maintenance Service  
Exp. 12-1-09

**Call Today**  
**410-374-9110**

Larry Green  
Owner & Operator

Proud to be an Official Sponsor



Seen on the Interstate...





Have you heard about.....

**Independent  
Wellness  
Consultant**

**“Magnetic Energy Products”**

To help reduce discomfort in these areas?

William (Bill) Brode  
4817 Rhode Island Ave.  
Hyattsville, MD 20781  
Bus. (301) 779-8338  
Cell (301) 529-3507  
Fax (301) 779-3300  
Email:williambrode@yahoo.com

- **Head**
- **Neck**
- **Back**
- **Joints**
- **Legs or feet**
- **Poor quality sleep**

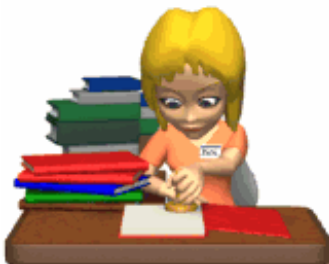
*See Pat Rinaldi with any questions.*

Magnetic energy products have helped millions of people worldwide...for 20 years. They are finally available in the USA for easy, daily self-use while people sit, walk and sleep.



# RECORDINGS R US

*Recordation of Legal Documents*



***Debbie Lacy***

**Finksburg, MD 21048  
(443) - 250 - 3026**

## **Serving:**

- Title Companies**
- Law Firms**
- Individuals**





# WOMEN'S NATIONAL DUCKPIN ASSOCIATION

*The Best in Women's Duckpin Bowling*

<http://www.wndatour.com>

## 2010 Tour Stop #1 - Hagerstown, Dual Lanes

| <b>Division "A"</b> | <b>Won</b> | <b>Lost</b> | <b>Pinfall</b> |
|---------------------|------------|-------------|----------------|
| Kendra Boswell      | 4          | 1           | 752            |
| Jen Distefano       | 4          | 1           | 745            |
| Amy Sykes           | 3          | 2           | 717            |
| Tammy Ashworth      | 2          | 3           | 651            |
| Diane Sears         | 1          | 4           | 637            |
| Lora Oliver         | 1          | 4           | 628            |

| <b>Division "B"</b> | <b>Won</b> | <b>Lost</b> | <b>Pinfall</b> |
|---------------------|------------|-------------|----------------|
| Andrea Lanahan      | 5          | 0           | 784            |
| Mindy Thomas        | 3          | 2           | 746            |
| Lisa Huber          | 3          | 2           | 705            |
| Adele Asimenios     | 2          | 3           | 630            |
| Kristen Robustelli  | 1          | 4           | 653            |
| Amy Sachs           | 1          | 4           | 631            |

| <b>Division "C"</b> | <b>Won</b> | <b>Lost</b> | <b>Pinfall</b> |
|---------------------|------------|-------------|----------------|
| Becky Sieck         | 4          | 1           | 716            |
| Jill Sachs          | 3          | 2           | 778            |
| Chris Primozic      | 3          | 2           | 661            |
| Stacey Gaegler      | 2          | 3           | 731            |
| Lauree Schreiber    | 2          | 3           | 707            |
| Debbie Vincent      | 1          | 4           | 657            |

| <b>Division "D"</b> | <b>Won</b> | <b>Lost</b> | <b>Pinfall</b> |
|---------------------|------------|-------------|----------------|
| Jackie Adams        | 5          | 0           | 737            |
| Bethany Fisher      | 3          | 2           | 696            |
| Janet Sauter        | 3          | 2           | 667            |
| Patty Palmer        | 2          | 3           | 711            |
| Denise Brooks       | 1          | 4           | 666            |
| Kayla Hebert        | 1          | 4           | 627            |

### LADDER FINALS

|               |                    |     |     |                    |     |
|---------------|--------------------|-----|-----|--------------------|-----|
| <b>Game 1</b> | Becky Sieck (4)    | 140 | Def | Jen Distefano (WC) | 108 |
| <b>Game 2</b> | Kendra Boswell (3) | 151 | Def | Becky Sieck (4)    | 130 |
| <b>Game 3</b> | Jackie Adams (2)   | 134 | Def | Kendra Boswell (3) | 127 |
| <b>Game 4</b> | Jackie Adams (2)   | 154 | Def | Andrea Lanahan (1) | 122 |

### MONEY WINNERS

|           |                |                  |                    |
|-----------|----------------|------------------|--------------------|
| <b>1</b>  | Jackie Adams   | <b>13</b>        | Stacey Gaegler     |
| <b>2</b>  | Andrea Lanahan | <b>14</b>        | Patty Palmer       |
| <b>3</b>  | Kendra Boswell | <b>15</b>        | Lauree Schreiber   |
| <b>4</b>  | Becky Sieck    | <b>16</b>        | Tammy Ashworth     |
| <b>5</b>  | Jen Distefano  | <b>17</b>        | Adele Asimenios    |
| <b>6</b>  | Jill Sachs     | <b>18</b>        | Denise Brooks      |
| <b>7</b>  | Mindy Thomas   | <b>19</b>        | Debbie Vincent     |
| <b>8</b>  | Amy Sykes      | <b>20</b>        | Kristen Robustelli |
| <b>9</b>  | Lisa Huber     | <b>21</b>        | Diane Sears        |
| <b>10</b> | Bethany Fisher | <b>22</b>        | Amy Sachs          |
| <b>11</b> | Janet Sauter   | <b>23</b>        | Lora Oliver        |
| <b>12</b> | Chris Primozic | <b>24</b>        | Kayla Hebert       |
|           |                | <b>Alternate</b> | Melissa Mahoney    |

### HIGH QUALIFIER

|           |      |
|-----------|------|
| Amy Sykes | 1230 |
|-----------|------|

### HIGH FOUR OUT OF EIGHT

|                |     |
|----------------|-----|
| Sharon Shipley | 609 |
|----------------|-----|

### ASIMENIOS AWARD

|           |     |
|-----------|-----|
| Amy Sykes | 211 |
|-----------|-----|

### Special Game

|                     |     |
|---------------------|-----|
| Debbie Hixon (1)    | 128 |
| Theresa Johnson (2) | 151 |
| Kelly Meyer (3)     | 141 |
| Debbie Conrad (4)   | 147 |

### DOT HULL HIGH SINGLE

|                   |     |
|-------------------|-----|
| Phyllis Frederick | 189 |
|-------------------|-----|

### MINOR AWARDS 129 & UNDER

|                   |                |     |
|-------------------|----------------|-----|
| <b>High Block</b> | Kari Shipley   | 588 |
| <b>High Game</b>  | Robin Mitchell | 183 |

### DRAWING WINNER

|                |
|----------------|
| Stacey Gaegler |
|----------------|



# 2010 Hagerstown Semi-Finals



## **Division A**

- Amy Sykes (MA)
- Lora Oliver (RI)
- Tammy Ashworth (MD)
- Jen DiStefano (RI)
- Diane Sears (MD)
- Kendra Boswell (VA)



## **Division B**

- Amy Sachs (MD)
- Lisa Huber (MD)
- Kristen Robustelli (CT)
- Adele Asimenios (MD)
- Andrea Lanahan (MD)
- Mindy Thomas (MD)



## **Division C**

- Jill Sachs (MD)
- Stacey Gaegler (MD)
- Chris Primozic (VA)
- Lauree Schreiber (MD)
- Deb Vincent (CT)
- Becky Weidele (MD)



## **Division D**

- Kayla Hebert (RI)
- Patty Palmer (MD)
- Denise Brooks (MD)
- Janet Sauter (MD)
- Jackie Adams (MD)
- Bethany Fisher (MD)

# ADAMS STRIKES GOLD AT DUAL LANES



*Jen DiStefano, Becky Sieck, Jackie Adams, Andrea Lanahan, Kendra Boswell*

Jackie Adams captured her 2<sup>nd</sup> star, and a gold medal in the 2010 Duckpin Olympics held at Turner's Dual Lanes in Hagerstown, Maryland over the Memorial Day weekend. During a weekend when we all took time to remember those who have fought for our freedom, and those who came and went before us, it seems fitting for this event to have been won by the child of a military mom!

For Jackie, her Saturday qualifying round was, in her words, "a test of focus and determination." According to Jackie, "The last time we bowled at Dual Lanes, I bowled so miserably that if you turned the Saturday Results sheet upside down, I was second." Jackie shot 1121 on Saturday, averaging over 140. After faltering a bit in games 2 and 3, Jackie said, "it was like deja vu -- at its worst!" However, being the true champion she is, Jackie was able to regroup for her last five games and shot 749 giving her the 9th qualifying spot.



*Gold medal winner Jackie Adams with husband Ray and daughter Stephanie.*

Jackie won her division on Sunday with a 5-0 record and a total pinfall of 737 to earn her the #2 seed on the ladder. In the first ladder match of the day 4th seeded Becky Sieck defeated wildcard Jen DiStefano, 140-108. Becky then went on to meet third-seeded Kendra Boswell. Kendra won the match 151-130. Jackie was up next, though, and proved in the end to be too much, outscoring Kendra 134-127, then she went on to defeat top-seeded Andrea Lanahan 154-122. "Sunday head-to-head matches are always tough and in three of them, I was down going into the 6th frame. Fortunately, a few lucky breaks went my way. Bowling Kendra and Andrea on the ladder presented the biggest challenge. They are both great bowlers and fierce competitors with many stars to show for it, and I think the world of both of them!"

"I was so happy that both Ray and Stephanie were there on Sunday to cheer me on -- and Tammy and Lauree too. It's amazing how, in a crowd of people, there are specific voices that you can hear so clearly, and I heard theirs loud and clear as they talked me through the day! I'd also like to thank Pat Rinaldi for my induction into the Hall of Fame Saturday night and Jayne Gillenwaters for filming the event. Pat's speech filled my heart, and my eyes too, and I was truly honored. In Lauree's words 'some things are just worth the wait' ... and this weekend was surely that! I feel so overwhelmed by it all and so very fortunate."

On a separate note, we saw a total of 76 bowlers this weekend, one of the largest fields of bowlers in the last 15 years. Four returning members qualified, and 3 of those returning members made it to the ladder. That is indeed a promising note for the season to come!

*Congratulations Jackie! What a great start to this 2010 season!*



| <div style="display: flex; justify-content: space-between; align-items: center;"> <span>★</span> <span>★</span> <span><b>2010 WNSA Tour Stop #1 - Hagerstown, MD</b></span> <span>★</span> <span>★</span> </div> |     |        |        |        |        |        |        |        |        |       |       |
|--|-----|--------|--------|--------|--------|--------|--------|--------|--------|-------|-------|
| Bowler   | AVG | Game 1 | Game 2 | Game 3 | Game 4 | Game 5 | Game 6 | Game 7 | Game 8 | Total | POA   |
| Sykes, Amy   | 141 | 211    | 156    | 159    | 140    | 164    | 114    | 138    | 148    | 1230  | 102   |
| Thomas, Mindy  | 137 | 146    | 133    | 133    | 151    | 137    | 149    | 177    | 152    | 1178  | 82    |
| Gaegler, Stacey  | 135 | 124    | 147    | 176    | 123    | 171    | 147    | 150    | 118    | 1156  | 76    |
| Fisher, Bethany  | 134 | 135    | 159    | 168    | 138    | 155    | 134    | 131    | 135    | 1155  | 83    |
| Boswell, Kendra  | 140 | 127    | 122    | 160    | 189    | 140    | 147    | 149    | 107    | 1141  | 21    |
| Lanahan, Andrea  | 140 | 143    | 159    | 148    | 152    | 145    | 126    | 144    | 107    | 1124  | 4     |
| Sachs, Jill  | 135 | 140    | 144    | 160    | 151    | 129    | 141    | 141    | 116    | 1122  | 42    |
| Asimenios, Adele   | 136 | 129    | 138    | 132    | 105    | 161    | 169    | 134    | 153    | 1121  | 33    |
| Adams, Jackie  | 139 | 150    | 114    | 108    | 148    | 175    | 140    | 136    | 150    | 1121  | 9     |
| DiStefano, Jennifer  | 129 | 130    | 148    | 147    | 115    | 130    | 145    | 148    | 158    | 1121  | 89    |
| Palmer, Patty  | 137 | 164    | 131    | 132    | 148    | 137    | 158    | 108    | 140    | 1118  | 22    |
| Primozić, Chris  | 138 | 131    | 158    | 120    | 145    | 143    | 110    | 118    | 193    | 1118  | 14    |
| Ashworth, Tammy  | 132 | 147    | 130    | 151    | 142    | 128    | 107    | 137    | 175    | 1117  | 61    |
| Robustelli, Kristen  | 126 | 158    | 124    | 142    | 152    | 110    | 131    | 147    | 142    | 1106  | 98    |
| Schreiber, Lauree  | 132 | 159    | 132    | 138    | 144    | 120    | 124    | 140    | 147    | 1104  | 48    |
| Hebert, Kayla  | 124 | 151    | 122    | 121    | 117    | 128    | 159    | 124    | 172    | 1094  | 102   |
| Sears, Diane   | 122 | 122    | 148    | 141    | 128    | 128    | 120    | 143    | 160    | 1090  | 114   |
| Huber, Lisa  | 141 | 122    | 139    | 116    | 133    | 127    | 130    | 178    | 141    | 1086  | (42)  |
| Sieck, Becky   | 132 | 159    | 127    | 149    | 93     | 103    | 149    | 152    | 152    | 1084  | 28    |
| Sauter, Janet  | 138 | 135    | 132    | 129    | 142    | 163    | 106    | 153    | 123    | 1083  | (21)  |
| ★ Pins Over Average ★  |     |        |        |        |        |        |        |        |        |       |       |
| Oliver, Lora   | 114 | 119    | 141    | 139    | 123    | 126    | 128    | 120    | 117    | 1013  | 101   |
| Sachs, Amy   | 114 | 139    | 125    | 104    | 149    | 99     | 132    | 143    | 113    | 1004  | 92    |
| Vincent, Debbie  | 125 | 122    | 162    | 140    | 145    | 148    | 108    | 124    | 129    | 1078  | 78    |
| Brooks, Denise   | 122 | 109    | 144    | 155    | 116    | 134    | 134    | 133    | 124    | 1049  | 73    |
| Alternate  |     |        |        |        |        |        |        |        |        |       |       |
| Mahoney, Melissa   | 132 | 151    | 129    | 114    | 129    | 129    | 141    | 137    | 149    | 1079  | 23    |
| Shiple, Sharon   | 132 | 143    | 157    | 164    | 109    | 145    | 122    | 108    | 122    | 1070  | 14    |
| Simms, Kristen   | 140 | 134    | 135    | 121    | 131    | 150    | 154    | 151    | 93     | 1069  | (51)  |
| Ward, Connie   | 143 | 126    | 125    | 149    | 131    | 125    | 144    | 112    | 155    | 1067  | (77)  |
| Mattern, Christy   | 140 | 126    | 148    | 109    | 118    | 134    | 166    | 119    | 146    | 1066  | (54)  |
| Penny, Kristy  | 134 | 126    | 163    | 129    | 113    | 150    | 128    | 95     | 162    | 1066  | (6)   |
| Phillips, Susan  | 139 | 117    | 129    | 115    | 141    | 115    | 148    | 150    | 144    | 1059  | (53)  |
| McClay, Danielle   | 140 | 115    | 122    | 137    | 120    | 137    | 149    | 126    | 147    | 1053  | (67)  |
| Johnson, Theresa   | 126 | 151    | 124    | 142    | 112    | 145    | 107    | 128    | 138    | 1047  | 39    |
| Rafferty, Trina  | 126 | 132    | 107    | 111    | 157    | 144    | 145    | 126    | 125    | 1047  | 39    |
| Shiple, Kari   | 126 | 122    | 148    | 146    | 124    | 101    | 117    | 116    | 170    | 1044  | 36    |
| Llewellyn, Melissa   | 137 | 112    | 145    | 133    | 124    | 130    | 123    | 143    | 131    | 1041  | (55)  |
| Pyles, Lisa  | 130 | 144    | 118    | 129    | 139    | 132    | 103    | 140    | 134    | 1039  | (1)   |
| Lipka, Corinne   | 130 | 110    | 129    | 123    | 167    | 90     | 131    | 158    | 130    | 1038  | (2)   |
| McMillen, Cindy  | 125 | 119    | 117    | 127    | 135    | 140    | 135    | 129    | 133    | 1035  | 35    |
| Canfield, Sandee   | 127 | 113    | 131    | 142    | 95     | 132    | 127    | 135    | 149    | 1024  | 8     |
| Silvia, Diane  | 131 | 112    | 132    | 133    | 138    | 111    | 135    | 129    | 128    | 1018  | (30)  |
| Hewitt, Jodi   | 127 | 115    | 123    | 112    | 132    | 150    | 143    | 127    | 114    | 1016  | 0     |
| Cohen, Tara  | 125 | 127    | 117    | 140    | 135    | 125    | 117    | 124    | 129    | 1014  | 14    |
| Buenger, Cindy   | 140 | 120    | 132    | 116    | 109    | 168    | 121    | 132    | 116    | 1014  | (106) |
| Conrad, Debbie   | 122 | 147    | 129    | 129    | 126    | 123    | 131    | 117    | 110    | 1012  | 36    |
| Mitchell, Robin  | 119 | 101    | 119    | 118    | 137    | 126    | 183    | 110    | 115    | 1009  | 57    |
| Breen, Christine   | 127 | 116    | 118    | 160    | 123    | 121    | 122    | 120    | 128    | 1008  | (8)   |
| Adams, Stephanie   | 131 | 132    | 125    | 140    | 126    | 113    | 117    | 130    | 125    | 1008  | (40)  |
| Frederick, Phyllis   | 140 | 106    | 106    | 104    | 129    | 189    | 117    | 115    | 141    | 1007  | (113) |
| Lewis, Jackie  | 118 | 90     | 115    | 128    | 129    | 140    | 133    | 137    | 132    | 1004  | 60    |
| Morales, Sherry  | 117 | 106    | 149    | 109    | 116    | 103    | 154    | 134    | 132    | 1003  | 67    |
| Durbin, Amanda   | 127 | 115    | 157    | 101    | 126    | 127    | 102    | 122    | 152    | 1002  | (14)  |
| Costa, Alicyn  | 125 | 89     | 153    | 100    | 128    | 120    | 180    | 113    | 115    | 998   | (2)   |
| Meyer, Kelly   | 128 | 141    | 125    | 134    | 92     | 109    | 127    | 140    | 128    | 996   | (28)  |
| Sczepucha, Robin   | 140 | 109    | 123    | 118    | 140    | 131    | 128    | 124    | 121    | 994   | (126) |
| Riccio, Pam  | 134 | 130    | 152    | 130    | 132    | 127    | 95     | 117    | 106    | 989   | (83)  |
| Carey, Christina   | 140 | 122    | 116    | 106    | 127    | 133    | 122    | 110    | 150    | 986   | (134) |
| Dayhoff, Beth  | 129 | 103    | 146    | 107    | 122    | 117    | 129    | 117    | 136    | 977   | (55)  |
| Bull, Kristen  | 127 | 122    | 108    | 115    | 133    | 133    | 126    | 88     | 145    | 970   | (46)  |
| Rinaldi, Pat   | 132 | 119    | 108    | 111    | 109    | 124    | 132    | 131    | 135    | 969   | (87)  |
| Dansereau, Katia   | 114 | 132    | 107    | 126    | 125    | 127    | 115    | 128    | 103    | 963   | 51    |
| Ritchie, Krystal   | 129 | 133    | 130    | 113    | 104    | 131    | 133    | 110    | 108    | 962   | (70)  |
| Pereira, Pam   | 140 | 131    | 100    | 110    | 120    | 117    | 142    | 128    | 112    | 960   | (160) |
| Norman, Marge  | 119 | 116    | 109    | 108    | 132    | 156    | 120    | 117    | 98     | 956   | 4     |
| Holder, Cindy  | 130 | 119    | 131    | 128    | 111    | 138    | 96     | 118    | 113    | 954   | (86)  |
| Fletcher, Paula  | 123 | 118    | 103    | 131    | 101    | 107    | 108    | 131    | 147    | 946   | (38)  |
| Pietro, Colleen  | 116 | 115    | 109    | 114    | 105    | 129    | 143    | 109    | 118    | 942   | 14    |
| Mahoney, Coleen  | 119 | 139    | 92     | 84     | 148    | 100    | 138    | 126    | 111    | 938   | (14)  |
| Schady, Stephanie  | 128 | 122    | 105    | 97     | 114    | 107    | 109    | 138    | 129    | 921   | (103) |
| Kropfelder, Debbie   | 128 | 144    | 109    | 136    | 108    | 121    | 98     | 104    | 101    | 921   | (103) |
| Hoff, Brenda   | 122 | 101    | 122    | 117    | 113    | 95     | 123    | 105    | 132    | 908   | (68)  |
| Nasisi, Stacey   | 126 | 92     | 98     | 108    | 123    | 110    | 140    | 105    | 120    | 896   | (112) |
| Pettit, Diz  | 126 | 110    | 106    | 124    | 118    | 122    | 109    | 116    | 87     | 892   | (116) |
| Hixon, Debbie  | 113 | 128    | 101    | 109    | 101    | 131    | 130    | 99     | 91     | 890   | (14)  |
| Sloan, Mary  | 133 | 99     | 113    | 113    | 105    | 102    | 129    | 105    | 112    | 878   | (186) |
| Nicholas, Amanda   | 111 | 115    | 100    | 104    | 92     | 92     | 144    | 93     | 90     | 830   | (58)  |



## WNDA Monthly Raffle Winners



Tickets for  
2010-2011  
on sale now!

You gotta play  
to have a chance  
to win!

September 2009  
October 2009  
November 2009  
December 2009  
January 2010  
February 2010  
March 2010  
April 2010  
May 2010  
June 2010

Mark Hammett  
Jeff Ferrand  
Vivian Walden  
Daniel Weigand  
Wendy Pappagallo  
Kat Griffin  
Ed Evans  
Paul Rossignol  
Patrick M. Gallo  
Denise Kohlhepp

Tickets for  
2010-2011  
on sale now!

Get yours!

See any  
WNDA member



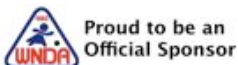
# C. MARINUCCI COMPANY, INC.

## Utility Contractor

**SPECIALIZING IN INSTALLING QUALITY SEWER,  
WATER, STORM WATER AND STORM WATER  
MANAGEMENT PIPING.**



**Mario Marinucci, Owner**  
**(301) 437-4584**

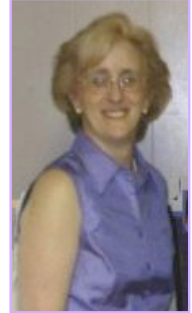




## 2nd Annual Theresa Belniak Service Award

Theresa Belniak was devoted to the game of duckpins. She served as the Treasurer for the WNDA for over twenty years, as President of the NDBC for three years, and on the Board of the NDBC for over 20 years. She also served in local and state duckpin associations. Theresa was elected to the Bowlers Association of Connecticut Hall of Fame in 1996 and 2006 and to the WNDA Hall of Fame in 2003.

This annual award is given to the WNDA member who best personifies the spirit of Theresa Belniak's service commitment to the WNDA. Theresa dedicated her time, efforts, expertise, and her heart to make the WNDA a successful organization. Each year the winner of this award will have shown their dedication to the tour, either in the past or in the present, by selflessly lending their time, their ideas, and their efforts to the success of the WNDA.



### Recipients

2008 Carol Mazzeo

2009 Pat Rinaldi



---

## 2009 Theresa Belniak Service Award Winner

*Pat Rinaldi*



This year marks our second anniversary for the *Theresa Belniak Award*. This annual award is given to the WNDA member who best personifies the spirit of Theresa's service commitment to the WNDA. Each year the recipient of this award will have shown his or her dedication to the tour, either in the past or in the present, by lending his or her time, ideas, and efforts to the success of the WNDA.

This year's recipient of the *Theresa Belniak Award* is also a long-time veteran and one of the founding members of the WNDA. She once served as the President of the WNDA and has participated behind the scenes for more than 25 years. While her name doesn't appear on the list of Governing Body members in your program book, you can be sure that she has had a hand or a voice in much of what we do.

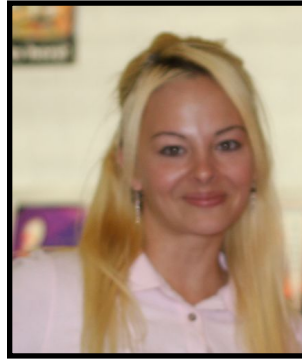
She volunteers her time to the tour by tending to the little things that mean so much to all of us. She mentors the Governing Body, serves as a sounding board, offers advice, travels around from city to city with her SUV loaded with "stuff" for the

WNDA and the ladies that compete on our tour. She donates tons of time, goodies, saleable items, advice, support, sportsmanship, and a sweet smile every time you see her. Whenever you talk to her about a new idea or a tour issue, her first response is - "oh, I can do that!" or "I've got it covered" or "what can I do to help?" She has also, behind the scenes, personally helped so many of our members when they needed it the most. Her heart is bigger than the state of Texas! She cares so much about the tour that she's willing to do just about anything to make it successful!

Pat Rinaldi truly exemplifies the spirit and devotion that the *Theresa Belniak Award* was intended to recognize.



# WANDA Rookie of the Year Award



2009 Rookie of the Year  
Stacy Nasisi

1984 Theresa Vermillion  
 1985 Carolyn Vallante  
 1986 Sandy Burke  
 1987 Jackie Adams  
 1988 Bonnie Myers  
 1989 Sharon Shipley  
 1990 Betty Jennings  
 1991 Andrea Lanahan  
 1992 Jaime St. Jean

1993 Lauree Schreiber  
 1994 Janet Sauter  
 1995 Karen Beaghan  
 1996 Beth Dayhoff  
 1997 Barbara Coale  
 1998 Bonnie Harpin  
 1999 Kendra Boswell  
 2000 Becky Bustin  
 2001 Aimee Lawrence

2002 Shannon Funkhouser  
 2003 Bethany Fisher  
 2004 Mindy Thomas  
 2005 Heather E. Davis  
 2006 Sarah Miller  
 2007 Jill Sachs  
 2008 Connie Ward  
 2009 Stacy Nasisi



## Don't Ever Lose Faith in Yourself



Do what is best for you.  
 The future will work itself out;  
 you're the kind of person  
 who can make it happen.  
 Don't let anyone else's negativity  
 influence your dreams, values,  
 or hopes.

Focus on what you can change  
 and let go of what you can't.  
 You know your own worth,  
 what you've accomplished,  
 and what you're capable of.

Your goals may take a bit longer  
 and be harder to achieve  
 than you had hoped,  
 but concentrate on the positives  
 and combine faith with  
 generous portions of patience  
 and determination.

Step boldly and confidently into  
 your future where happiness,  
 success, and dreams await you.

You have the potential for greatness...  
 never give up!

~ Barbara Cage, Poet

~ Compliments of Jayne Gillenwaters in support of the WANDA ~

# ANN SCHMITTER MEMORIAL AWARD SPORTSWOMAN OF THE YEAR



In 1986, the WNDA Governing Body established the *Ann Schmitter Memorial Sportswoman of the Year Award* in memory of one of the finest ladies the game of duckpins has ever known Ann Schmitter, of Glastonbury, CT. Ann was devoted to the game of duckpins on every level, from local league play to both the Ladies Professional Duckpin Tour and the WNDA, serving in many positions from league Secretary and President, to the Connecticut Area Representative for the Pro Tour. She was a lady both on and off the lanes and was well respected by everyone who made her acquaintance.

This annual award is given to the WNDA member who best exemplifies the qualities that Ann brought to the game: good sportswomanship, dedication, and unselfish devotion to the game of duckpins and to her fellow bowlers. Anyone may nominate a WNDA member to receive the award. Nominations must be submitted in writing and clearly support why the nominee should be honored with the *Ann Schmitter Award*.

## ANN SCHMITTER AWARD RECIPIENTS

|      |                 |      |                    |      |                 |
|------|-----------------|------|--------------------|------|-----------------|
| 1986 | Wilda Guerrette | 1994 | Sharon Petrecca    | 2002 | Diane Silvia    |
| 1987 | Carole Gittings | 1995 | Lynne Heller       | 2003 | Andrea Lanahan  |
| 1988 | Toni Crunkleton | 1996 | Donna Biondo       | 2004 | Debbie Lacy     |
| 1989 | Mariellen Vogt  | 1997 | Debbie Conrad      | 2005 | Tammy Ashworth  |
| 1990 | Sue Swann       | 1998 | Patty Brandenberg  | 2006 | Betty Bartley   |
| 1991 | Kathy Williams  | 1999 | Mary Ann Cochefski | 2007 | Brenda Hoff     |
| 1992 | Pat Rinaldi     | 2000 | Betty Jennings     | 2008 | Adele Asimenios |
| 1993 | Theresa Belniak | 2001 | Jackie Adams       | 2009 | Susan Phillips  |

## 2009 Ann Schmitter Memorial Award Sportswoman of the Year *Susan Phillips*



2008 Ann Schmitter Memorial Award recipient, Adele Asimenios, presents the award plaque to the 2009 recipient, Susan Phillips.

For the past 24 years, the WNDA has recognized someone that represents the best qualities of sportswomanship and dedication by presenting the *Ann Schmitter Memorial Award*.

The 2009 recipient is a long-time veteran of the WNDA. Over her career, she has experienced the thrill of winning a star as well as disappointment on the lanes. She has handled both with dignity and model sportswomanship.

When you realize that you have drawn her lanes on Saturday, a smile comes to your face. She's not just another great bowler with whom you will try to pace yourself. At that moment you realize that someone on your pair of lanes will root for you every frame for all eight games, will congratulate you when you perform well, and will lift you up when you are struggling, no matter how she is bowling.

On Sunday, she is a fierce competitor, but her smile and charisma will win you over. She is the epitome of a great bowler, with great charm, who shows great kindness, and will support her fellow participants until the last ball is thrown and then some.

She is always a lady on and off the lanes. Her character is that which one would expect of a professional. Her smile and her laugh are contagious, and will warm your heart. She is a model for all of us to follow - a true sportswoman!



Proud to be an  
Official Sponsor

## *Rinaldi's* **RIVERDALE BOWL**

**"WE WANT BOWLING TO BE THE BEST PART OF YOUR DAY!"**

- Join us for our Galactic Light & Sound Show every weekend
- Bring your family and friends to open bowl
  - Sign up for a league
  - Have a birthday party for any age
  - Organize your company outing
    - Up office morale with some fun competition
    - Play pool and have a brew in our friendly bar

Best Wishes to the  
**WMDA!**

### *Rinaldi's* RIVERDALE BOWL



6322 Kenilworth Avenue  
Riverdale, Maryland 20737



**(301) 864-5940**



Bowl one game of open play and get one FREE with this ad!  
Not valid with any other specials or promotions.



# WANDA Bowler of the Year Award



2009 Bowler of the Year  
Jackie Adams

## 2009 WANDA Statistics

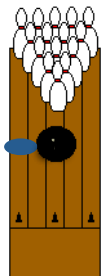
- 1 Tour Win
- 3 Ladder Appearances
- 6 Times Qualifying
- 139.5 Overall WANDA Average
- 432 BOY Points

|      |                  |      |                  |      |                |
|------|------------------|------|------------------|------|----------------|
| 1983 | Kathy Broda      | 1992 | Diane Sicca      | 2001 | Amy Sykes      |
| 1984 | Phyllis Rigoulot | 1993 | Kathy Lischio    | 2002 | Amy Sykes      |
| 1985 | Pat Malthan      | 1994 | Pat Malthan      | 2003 | Amy Sykes      |
| 1986 | Diane Sicca      | 1995 | Diane Sears      | 2004 | Amy Sykes      |
| 1987 | Betty Bartley    | 1996 | Lauree Schreiber | 2005 | Kendra Boswell |
| 1988 | Karen Smith      | 1997 | Lynne Heller     | 2006 | Kendra Boswell |
| 1989 | Diane Sicca      | 1998 | Sharon Shipley   | 2007 | Amy Sykes      |
| 1990 | Diane Sicca      | 1999 | Lynne Heller     | 2008 | Connie Ward    |
| 1991 | Diane Sicca      | 2000 | Melissa Greaver  | 2009 | Jackie Adams   |

## White Oak Bowling Lanes

([www.whiteoaklanes.com](http://www.whiteoaklanes.com))

  
**Cosmic Bowling**  
**Every Saturday Night**



**24 Duckpin Lanes**

**Birthday Parties**



**11207 New Hampshire Avenue,  
Silver Spring, MD 20904  
(301) 593-3000**

**Owner, Ralph Curry**

# The WNDA is Going GREEN

We are all too well aware of how fragile our environment can be and the effect modern life has on it. The WNDA has recently launched a **DO IT FOR THE GREEN** initiative that is intended to make our organization more eco-friendly and to help raise awareness amongst our members, supporters, and fans.



In April, we entered into a partnership with Gazelle to recreate a responsible electronics recycling program. American's throw away more than 350,000 cell phones in excess of 130,000 computers daily - making electronic waste the fastest growing part of the U.S. garbage stream. When improperly disposed of, these products can leak lead, cadmium, mercury... you get the idea. These can all affect the quality of clean water, agriculture, air and soil. Gazelle is one of the premier recyclers in the US and has a series of service providers that refurbish or recycle these products in full compliance with EPA and international standards.

Our partnership with Gazelle is not without other benefits. If electronics can be refurbished and sold on the secondary market, the WNDA will receive another kind of green - a portion of the proceeds. Do you or your company have any old electronics still laying around? Perhaps an old computer, monitor, mobile phones, video games, calculators, digital cameras or camcorders? Doing Spring cleaning and find things you just don't use any more? Or are you planning to upgrade your mobile phone or television? Now you can join the WNDA **DO IT FOR THE GREEN** program and get rid of them responsibly and safely at no cost to you!  
*Even the shipping cost is taken care of!*

We have set a goal of recycling \$2,000 worth of electronics in 2010. Our special Gazelle page will track our progress towards meeting this goal. So, dig up those old electronics and point your computer's browser to <http://wnda.gazelle.com>. This custom page will step you through the process of getting your items ready for proper recycling.

## Recycle Old Toner & Ink Cartridges



The WNDA has joined Staple's ink and toner recycling program. Not only does it help to ensure that used cartridges are properly disposed of, but the WNDA receives credits that we can apply towards our operating supplies and costs. After only two days in the program, it has already helped cut the cost of office supplies.



Don't throw out those old or empty cartridges. If your employer doesn't already have a similar program, offer to dispose of their empties through our recycling program. You can bring them to a WNDA event and there will be a collection box near the sign-in station. If you can't do that, then give them to any WNDA officer or Governing Body representative.

*Help save the environment and cut our expenses at the same time.*

